

THIS DRAWING IS UNPUBLISHED. RELEASED FOR PUBLICATION
 © COPYRIGHT - By - ALL RIGHTS RESERVED.

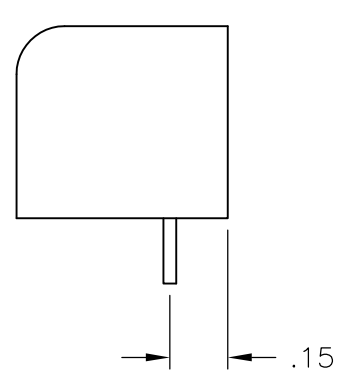
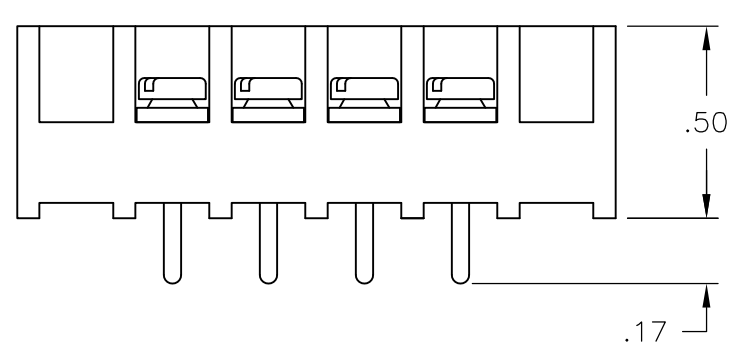
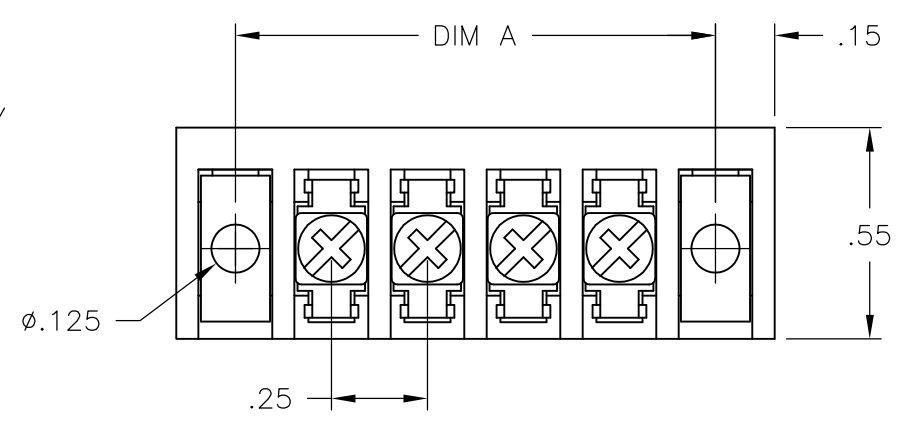
| LOC | DIST | REVISIONS | | | | | |
|-----|------|-----------|-----|---------------------------|---------|-----|------|
| FT | 0 | P | LTR | DESCRIPTION | DATE | DWN | APVD |
| | | G | | REVISED PER ECO-11-023401 | 01DEC11 | KH | MS |

MATERIAL:
 HOUSING: THERMOPLASTIC, UL94V-0, BLACK.
 TERMINAL: BRIGHT TIN PLATED, COPPER ALLOY.
 SCREWS: SEE TABLE.

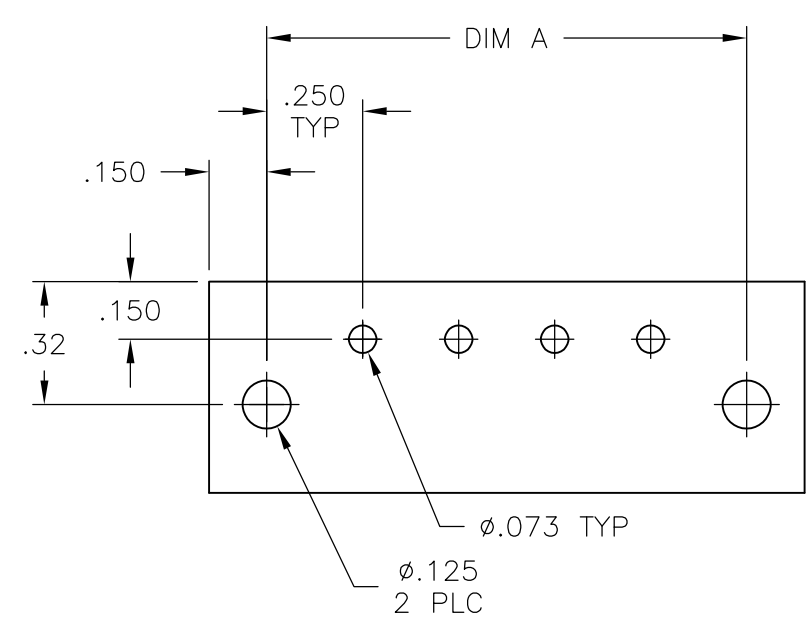
ELECTRICAL:
 RATED CURRENT: 10A.
 OPERATING VOLTAGE: 300V.
 WIRE RANGE: 16-30 AWG.

MECHANICAL:
 PITCH (TERMINAL SPACING): .250"
 OPERATING TEMP.: 120°C MAX.

1 M3 THREAD STAINLESS STEEL SCREWS/
 WASHERS.



| | | | | |
|---|---------|-------------|----------------|-------------|
| M3 THREAD ZINC PLATED STEEL | 7.25 | 28 | 3PCV-28-008 | 2-1546011-8 |
| | 7.00 | 27 | 3PCV-27-008 | 2-1546011-7 |
| | 6.75 | 26 | 3PCV-26-008 | 2-1546011-6 |
| | 6.50 | 25 | 3PCV-25-008 | 2-1546011-5 |
| | 6.25 | 24 | 3PCV-24-008 | 2-1546011-4 |
| | 6.00 | 23 | 3PCV-23-008 | 2-1546011-3 |
| | 5.75 | 22 | 3PCV-22-008 | 4-1546119-0 |
| | 5.50 | 21 | 3PCV-21-008 | 2-1546011-1 |
| | 5.25 | 20 | 3PCV-20-008 | 2-1546011-0 |
| | 5.00 | 19 | 3PCV-19-008 | 1-1546011-9 |
| | 4.75 | 18 | 3PCV-18-008 | 1-1546011-8 |
| | 4.50 | 17 | 3PCV-17-008 | 1-1546011-7 |
| | 4.25 | 16 | 3PCV-16-008 | 3-1546119-5 |
| | 4.00 | 15 | 3PCV-15-008 | 1-1546011-5 |
| | 3.75 | 14 | 3PCV-14-008 | 1-1546011-4 |
| | 3.50 | 13 | 3PCV-13-008 | 3-1546119-3 |
| | 3.25 | 12 | 3PCV-12-008 | 3-1546119-1 |
| 3.00 | 11 | 3PCV-11-008 | 3-1546119-0 | |
| 2.75 | 10 | 3PCV-10-008 | 1546011-4 | |
| 2.50 | 9 | 3PCV-09-008 | 1546011-9 | |
| 2.25 | 8 | 3PCV-08-008 | 1546011-3 | |
| 2.00 | 7 | 3PCV-07-008 | 1546011-7 | |
| 1.75 | 6 | 3PCV-06-008 | 7-1437647-7 | |
| 1.50 | 5 | 3PCV-05-008 | 2-1546011-9 | |
| 1.50 | 5 | 3PCV-05-008 | 1546011-5 | |
| 1.25 | 4 | 3PCV-04-008 | 1546011-2 | |
| 1.00 | 3 | 3PCV-03-008 | 1546011-1 | |
| .75 | 2 | 3PCV-02-008 | 3-1437646-4 | |
| SCREWS | DIM "A" | NO OF POS | CATALOG NUMBER | PART NUMBER |



RECOMMENDED PCB LAYOUT

| | | | | |
|--|--|------------------------|----------------------------|-----------------|
| THIS DRAWING IS A CONTROLLED DOCUMENT. | | DWN S SCHLEGEL 4/10/03 | STE TE Connectivity | |
| DIMENSIONS: INCHES | | CHK S YODER 4/10/03 | | |
| TOLERANCES UNLESS OTHERWISE SPECIFIED: | | APVD S YODER 4/10/03 | NAME | |
| 0 PLC ± - | | PRODUCT SPEC | 3PCV-XX-008 ASSEMBLY | |
| 1 PLC ± - | | APPLICATION SPEC | RESTRICTED TO | |
| 2 PLC ± .02 | | WEIGHT - | SIZE A3 | CAGE CODE 00779 |
| 3 PLC ± .010 | | CUSTOMER DRAWING | DRAWING NO C-3-1437646-4 | |
| 4 PLC ± - | | | SCALE NTS | SHEET 1 OF 1 |
| ANGLES ± - | | | | |
| FINISH - | | | | |